

WELCOME

Hello,
My name is TeamOnline
and I am economic information system.

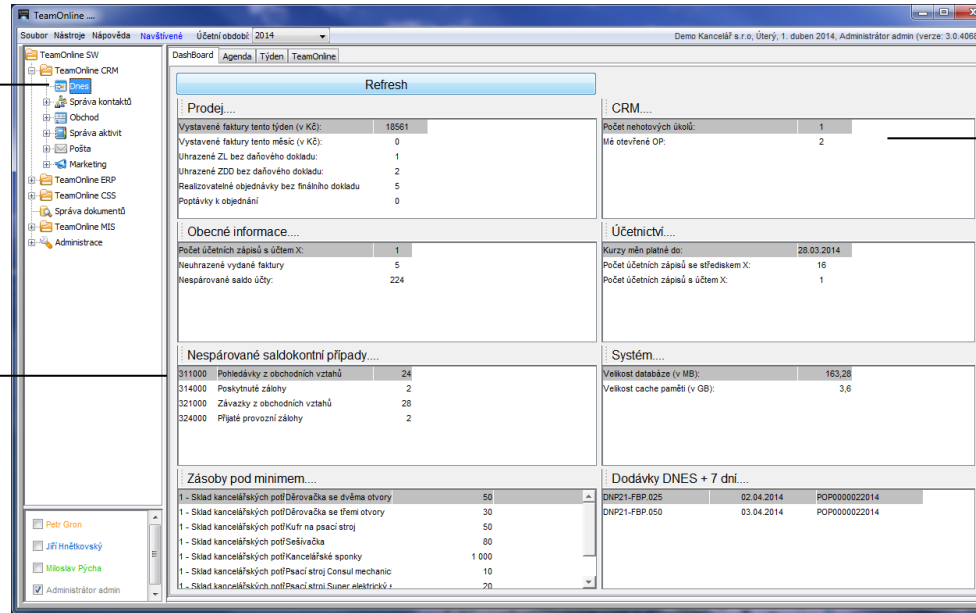
I always welcome you on this screen, where I try to clearly display useful information just for your role in the system.

Dashboard

It serves to show major events such team scheduled tasks, plan sales performance etc..

Everyone is interested in something else

The panels can be set individually for each user. Accountant is interested in ledger accounts status. Compared to the storekeeper, who cares below the minimum inventory, or goods that



User views

The content of individual panels are user-defined views that can be created in the MIS module. This allows you to set up nearly any content that welcomes you.

ENVIRONMENT

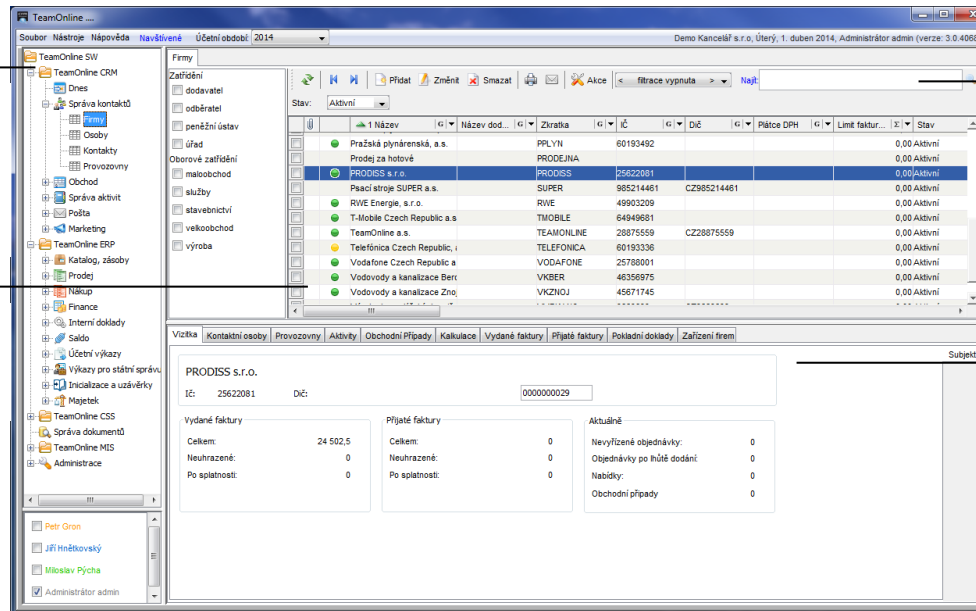
When designing this application, we tried to respect proven and intuitive ways to control such as similar programs. It allows the user to immediately focus in natural and familiar environment.

Navigator

The navigation tree is used by default for accessing the individual modules and activities.

Main panel

It contains a list of headers and documents.



Toolbar

The handy helper includes full-text search. Under button „Akce“ we can find other features such as export to Excel or ISDOC.

Detailed info

At the bottom of the work window is space for detail to each entry. For example in the directory you can see documents to the selected entity (payment, invoices, offers, ...)

TEAM

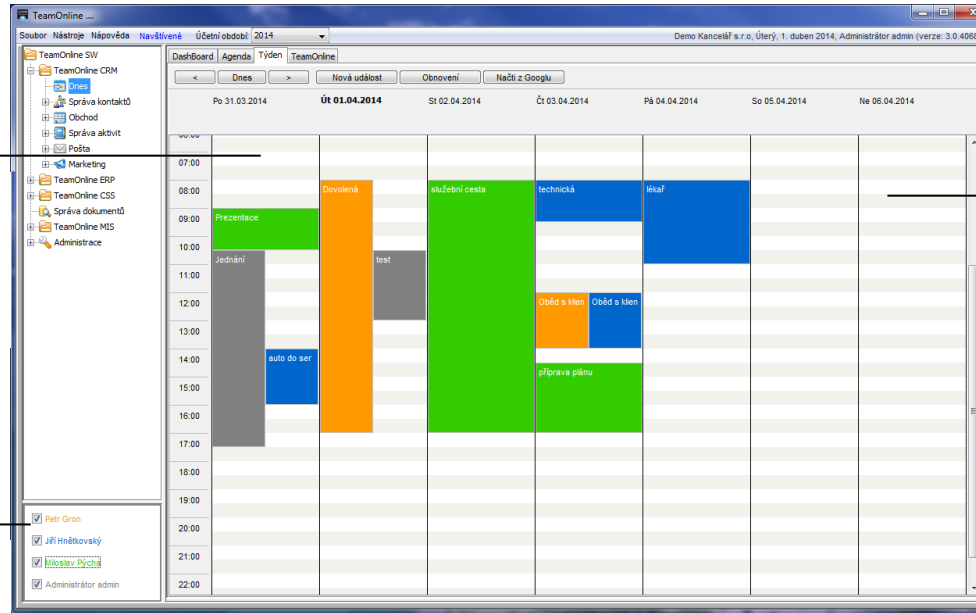
TeamOnline is designed primarily for team collaboration. Users can jointly solve business cases, tasks and schedule time with integrated calendar.

Users

Integrated groupware features used for closer cooperation team and interchangeability.

Chat

Communication online with colleagues within the application.



Google Apps

If you have activated Google accounts you can synchronize your calendar with mobile smart phone and other mobile devices.

CONNECTION

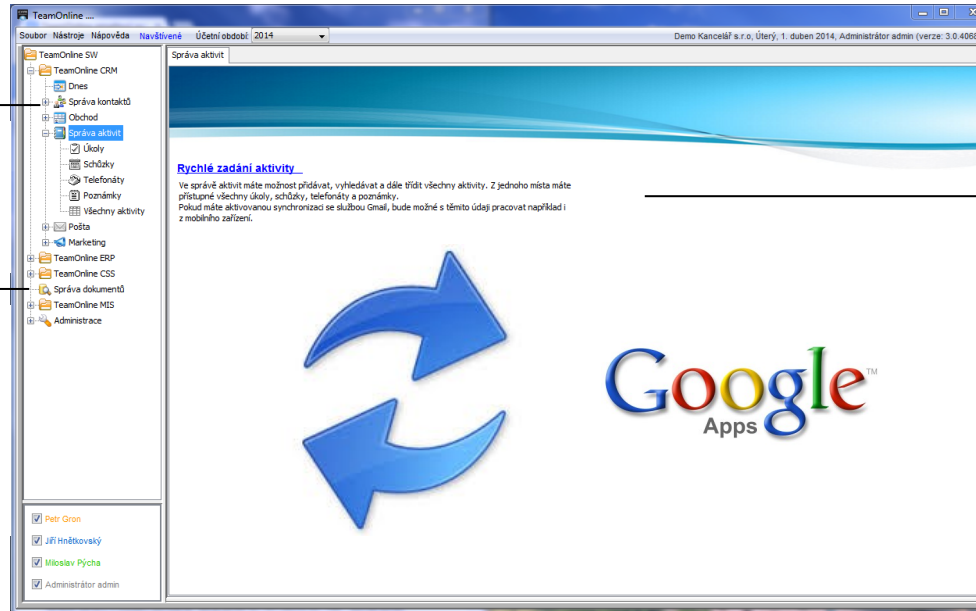
Consolidation of corporate agendas and associated records into one comprehensive system is the way to further development of the company.

Email

Integrated email client automatically connect message to the business case. Share communication

DMS

Keep contracts, copies of documents, reports etc. at one place. Simply link them with the documents.



Activities

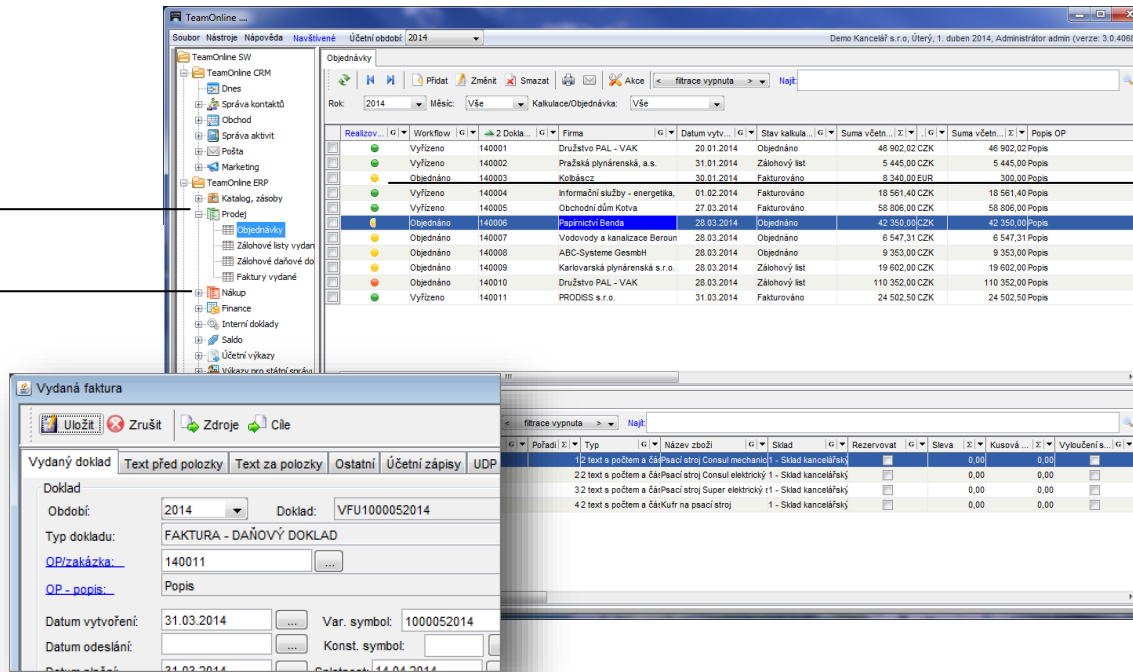
Tasks delegation, connection to a PABX, structured notes and events. All combined into perspective again traceable to the individual accounting documents.

SHOP

The entire business is controlled by preset rules for the flow of documents. Each document may have defined its objectives and resources (documents preceding and following), and these are then offered if the evidence reaches a certain state workflow.

Sale

Purchase



Pictograms

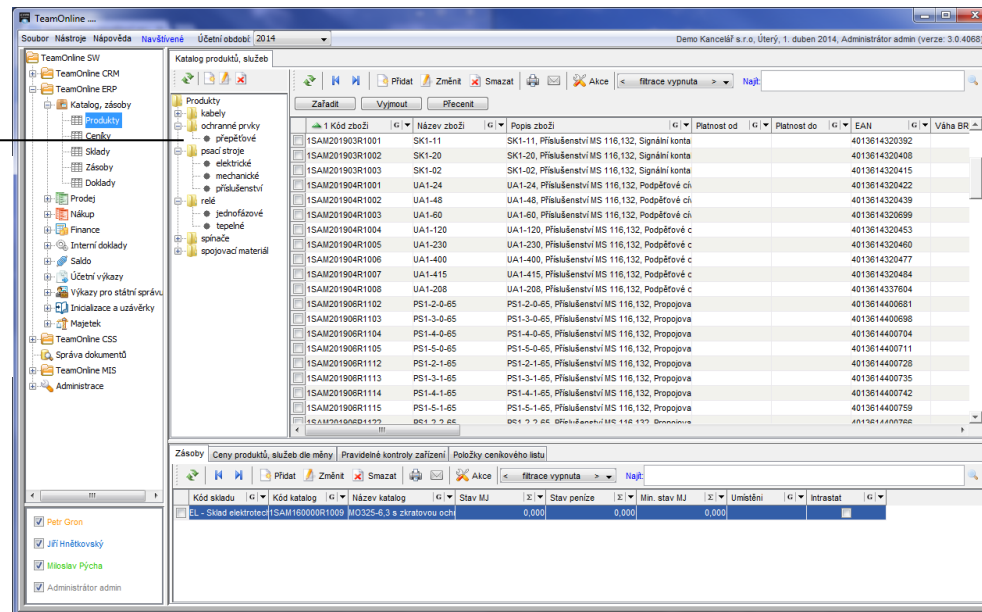
Gives information on the feasibility of orders. Red indicates the order unworkable, yellow full indicates fully realizable, yellow half full indicates partially realizable and green indicates settled.

CATALOGUE

Catalogue of products form the backbone for the registration records of inventory and pricing. The products can be traced suitable suppliers according to the ratio of the delivery date/price record packaging, weight, dimensions, etc.

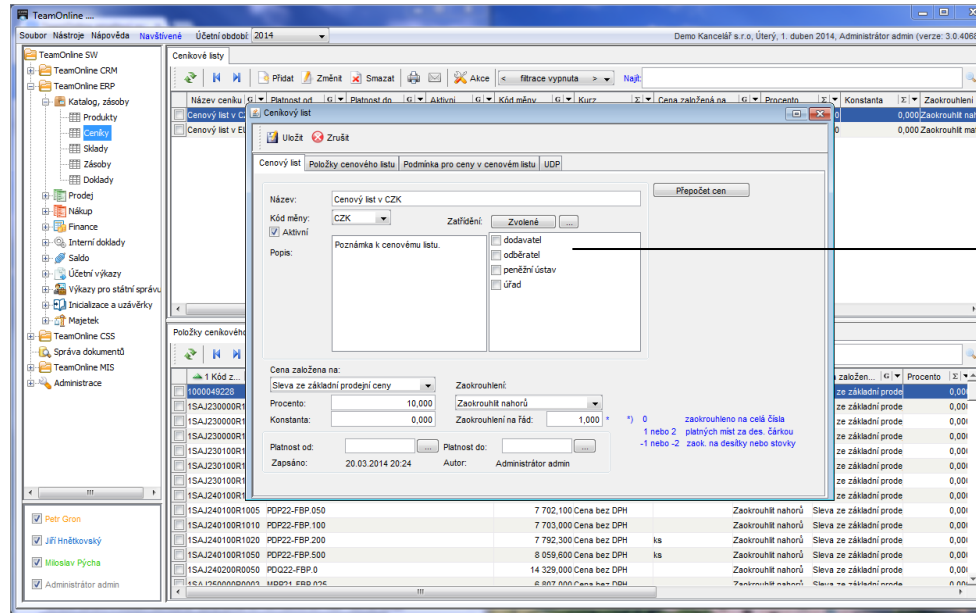
Department

Catalogue can be split for easier orientation to separate the products.



PRICING

Copy an existing price list, save under a new name and specify its validity. We extremely simplified that process. Price lists can be created for groups of customers (end customer, Dealer ABC, VIP), or the seasonal effect (Christmas, summer, events).

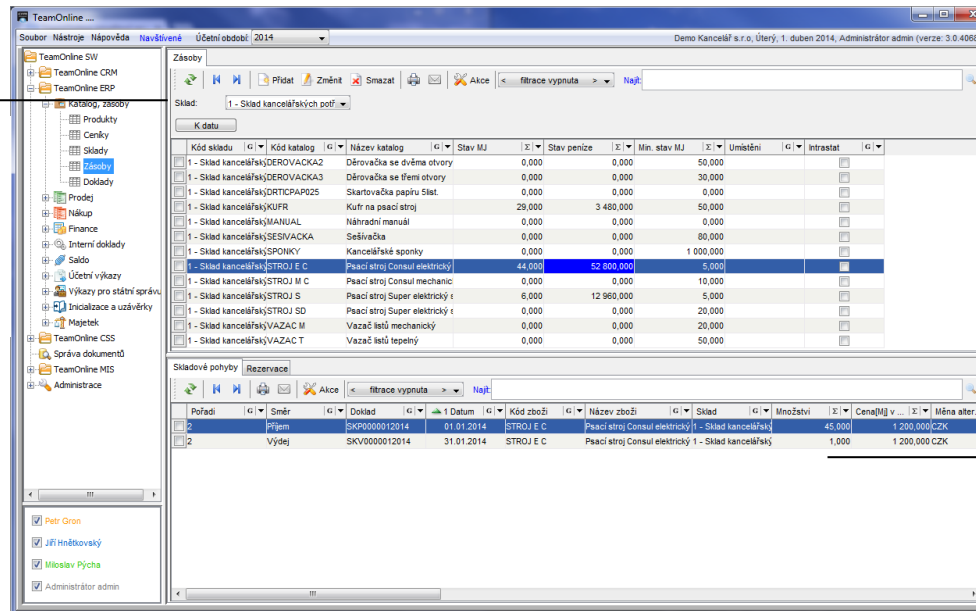


Price lists
You can define any number. Consequently it's possible to assign them to a group of companies.

RESOURCES

Goods can be simply registered as stocks with everything that goes with it (valued using the FIFO/weighted average, serial numbers, batch, expiration date, etc.). In conjunction with the goods can be booked orders for a customer or even the business case and to determine when the goods can be blocked. We recommend barcode reader or RFID using with this module.

Stores
Stock cards are displayed after selecting a warehouse.



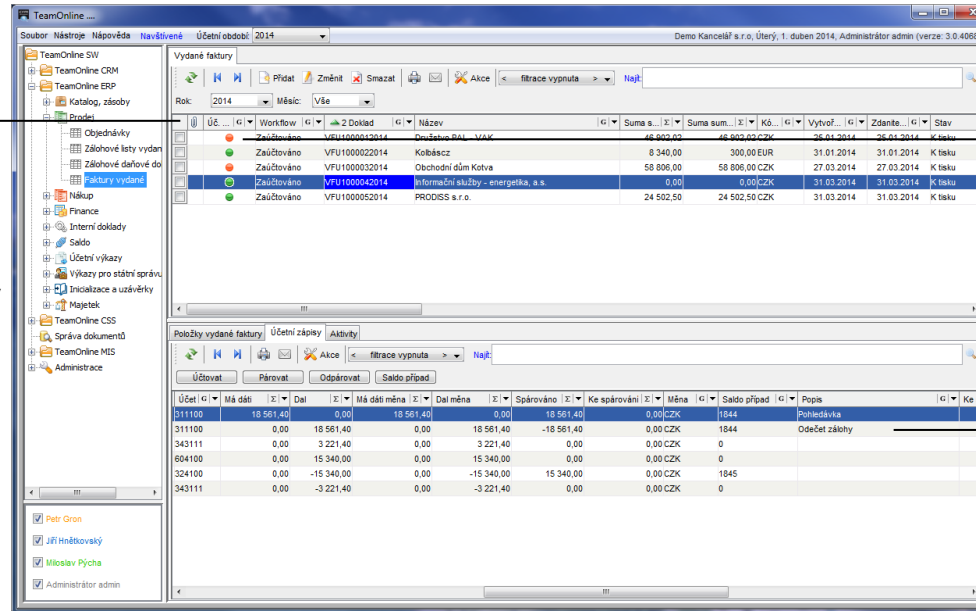
Stock movements for the selected stock card.

ACCOUNTING

Accounting TeamOnline have to worry about so-called accounting types. This is a set of instructions by which a method is defined by which a document is decay documents in accounting. Their existence allows the to adapt flexibly to future today unknown user needs and the lowest level imaginable. The system can be used to learn frequently recurring operations by accounting types.

Posting

Posting takes place immediately after setting the appropriate state workflow on the document. For example incoming invoices for approval by the client, netting Offsetting or counterparty credit notes after approval, invoices issued immediately, etc.



Pictograms

A red icon indicates that the document is not completely resolved. For example - is not paired with a receipt warehouse (in the case of invoice received) or doesn't

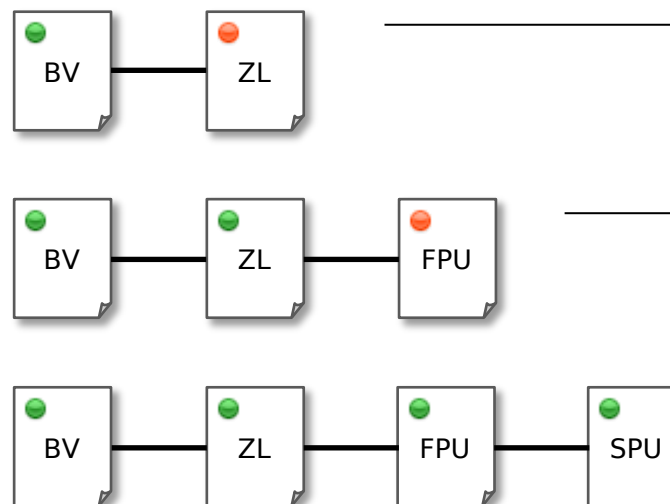
Panels

Immediately visible accounting and pairing decay in the document's detail.

PAIRING

TeamOnline itself automatically finds and connects ledger cases. The mechanism of pairing is not only focused on customers and suppliers, but it is also used in other areas (acquisition of goods, cash in transit, ...). Pairing differences to a certain amount recognizes program itself and unpaired documents are clearly marked.

Graphic highlight of automatically paired documents at the level of warehouse receipts.



Step 1

Receipt of advance sheet is paired bank payment. spárování s úhradou v bance.

Step 2

Buffer list paired with the approved invoice.

Step 3 (all concluded)

Receipt of invoice paired with a receipt warehouse.

OUTPUTS

The TeamOnline contains all the standard reports for the government and it clearly worked, saved with the archived history of processing and sending information electronically.

Comfortably

Don't you have the number? Conveniently click on it and soon find out what it consists of.

The screenshot displays the TeamOnline application window. On the left is a navigation tree with categories like 'TeamOnline SIV', 'TeamOnline CRM', 'TeamOnline ERP', 'Prodej', 'Nákup', 'Finance', 'Interní doklady', 'Saldo', 'Účetní výkazy', 'Výkazy pro státní správu', 'Hlavní kniha', 'Výkazy DPH', 'Souhrnné hlášení', 'Výpočet AP,ZZ', 'Srovnání', 'Inovace a užitky', 'Majetek', 'TeamOnline CSS', 'Správa dokumentů', 'TeamOnline MIS', and 'Administrace'. The main window shows a table of VAT reports with columns for 'Datum výpo...', 'Vypočetí', 'Datum odev...', 'Typ příznání', 'Kód zdan...', 'Odevzdal', 'Kód...', 'Popis', 'Období od', and 'Období do'. Below the table is a 'Doklad' section with columns for 'Kód přenes.', 'Doklad', and 'Převodní znak'. An Adobe Reader window is overlaid on the right, displaying a tax declaration form titled 'PŘÍZNÁNÍ k dani z přidané hodnoty' for the Czech Republic (Sčeskočeský kraj). The form includes fields for taxpayer information, tax identification number, and reporting period.

Archives

We maintain an archive of all outputs with a time stamp and information about the processor.

Reports

The reports we had also matter.



Continued click here: <http://goo.gl/RO7ZT3>

TeamOnline is a project of Prodis s.r.o., which was established in 2006, whose aim was to create a universal software platform for the corporate agenda and methodology of their implementation. The basic requirement was customizable with the minimal intervention into the source code, operable without installing a client part to easily consolidate all corporate agenda. Due to further expansion of the project in 2009, we established a joint stock company of the same name. Comprehensive solutions for field CRM, ERP, CSS and BI serves as the reference samples of what you can create in this platform.

CRM includes:

- management of companies, establishments, people and contacts
- management of business transactions and contracts
- management of company activities (events, tasks, phone calls, emails)
- marketing (target groups, campaigns)

ERP area comprises:

- complete agenda for the economy and finance
- purchase
- sale
- asset tracking and inventory
- accounting, reporting for government

CSS area comprises:

- managing customer service
- records of spare parts

BI area includes:

- analysis of purchase and sale
- analysis of contracts and dissolution costs
- tool for creating views
- corporate dashboards
- TeamReporter (automatic email sending results)